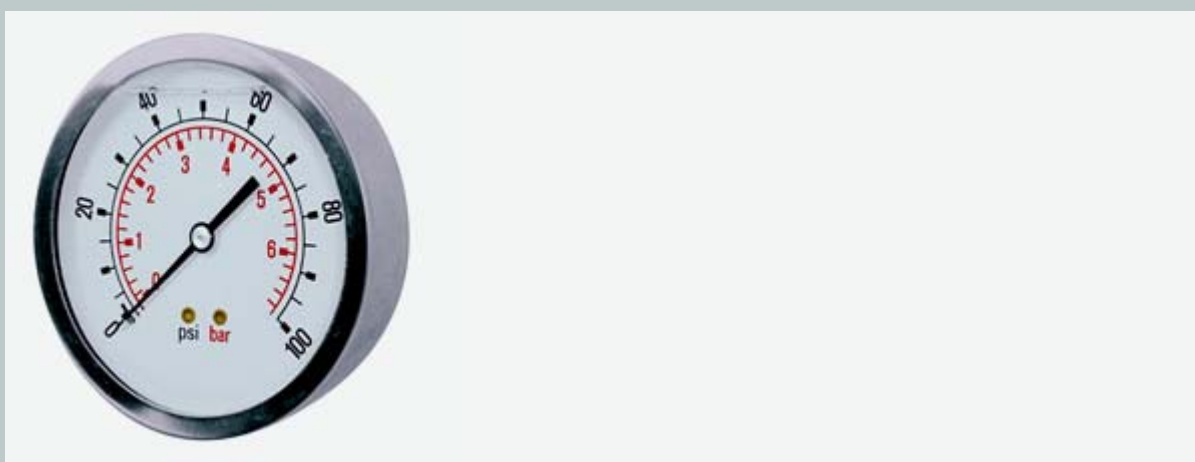


PRESSURE GAUGES - GLYCERINE FILLED BACK CONNECTION - STAINLESS STEEL CASED

APPLICATION : Measurement of the pressure of fluid liquids or gases up to 25 bar that are not highly viscous, subject to crystallisation or corrosive to copper or tin alloys. Particularly suitable for applications where oscillating or surge pressures are present and for mounting on equipment subject to severe vibration. Designed for panel mounting bracket or 3 hole mounting flange.

SPECIFICATION : **Case and bezel :** stainless steel AISI 304. **Window :** shatter resistant acrylic. **Damping Liquid:** bidistilled glycerine. **Connection :** brass. **Sensitive element :** bronze Bourdon tube or chrome molybdenum steel tube depending on pressure range. **Mechanism :** high precision watchmakers brass. **Joints :** soldered in tin alloy or silver alloy for pressure above 60 bar. **Indicator :** tempered steel. **Dial :** stoved enamel on aluminium. **Accuracy :** class 1.6. **Scale :** psi (outer) + bar (inner).

PRICES : Please note that prices shown are the current list price for each gauge or product. OEM and re-seller discounts are available together with progressive quantity discounts.



100mm (4") diameter, Centre back connection, 1/2" BSP parallel thread, Dual Scale : psi+bar

Code 904 990 02	Vacuum -30"Hg	(-1 bar)	£ 44.00
Code 904 990 03	Range 15 psi	(1 bar)	£ 44.00
Code 904 990 05	Range 30 psi	(2 bar)	£ 36.95
Code 904 990 08	Range 60 psi	(4 bar)	£ 36.95
Code 904 990 10	Range 100 psi	(7 bar)	£ 36.95
Code 904 990 20	Range 160 psi	(11 bar)	£ 36.95
Code 904 990 30	Range 200 psi	(14 bar)	£ 36.95
Code 904 990 35	Range 300 psi	(21 bar)	£ 38.50
Code 904 990 40	Range 400 psi	(28 bar)	£ 38.50
Code 904 990 50	Range 600 psi	(41 bar)	£ 41.95
Code 904 990 60	Range 1000 psi	(70 bar)	£ 41.95
Code 904 990 70	Range 1500 psi	(103 bar)	£ 41.95
Code 904 990 75	Range 2000 psi	(138 bar)	£ 41.95
Code 904 990 80	Range 2500 psi	(172 bar)	£ 41.95
Code 904 990 85	Range 3000 psi	(207 bar)	£ 41.95
Code 904 990 90	Range 4000 psi	(275 bar)	£ 41.95
Code 904 990 95	Range 5000 psi	(345 bar)	£ 41.95
Code 904 991 00	Range 6000 psi	(414 bar)	£ 41.95
Code 904 991 10	Range 10000 psi	(690 bar)	£ 46.75

Please Note

3/8" BSP thread also available.

Panel Mounting Bracket

These Ø 100 gauges can be supplied with a **panel mounting bracket**.

Additional price for bracket

Ø 100 £2.95 Code 914 989 07

Please add the letter "S" to order code.

Stainless Steel 3 Hole Front Flange

These Ø 100 gauges can be supplied with a **3 hole front flange**.

Additional price for front flange

Ø 100 £4.95 Code 914 989 06

Please add the letter "F" to order code.

cewal UK LTD

Unit 4C • Woodhall Business Park • Sudbury • Suffolk • CO10 1WH

Tel: +44 (0) 1787 882038 • Fax: +44 (0) 1787 882039

Email: info@cewal.co.uk • Website: www.cewal.co.uk