

PRESSURE GAUGES - ALL STAINLESS STEEL CONSTRUCTION - BACK CONNECTION

APPLICATION :For use where aggressive conditions or substances may be used which would cause corrosion to standard gauges and for specific industries requiring all stainless steel construction, for example:- food processing, pharmaceutical and petrochemical. When glycerine filled particularly suitable for oscillating or surge pressures or an equipment subject to vibration.

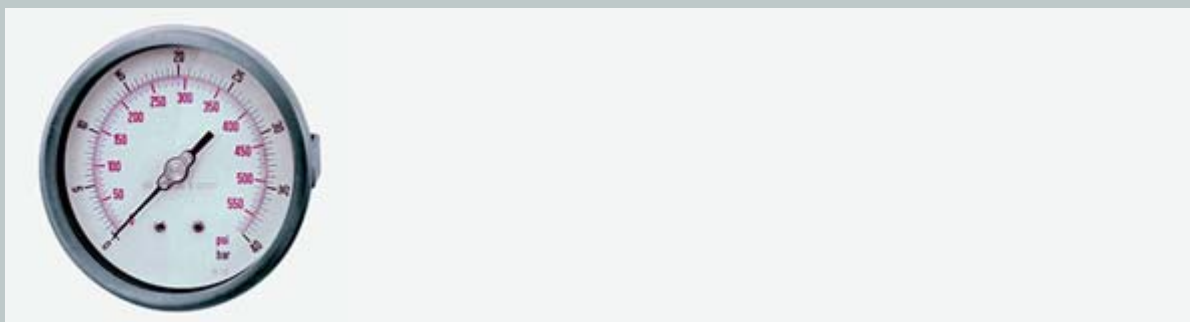
SPECIFICATION :**Case** : stainless steel AISI 304. **Connection** : stainless steel AISI 316. **Sensitive element** : stainless steel AISI 316. **Movement** : stainless steel. **Joints** : stainless steel. AISI 316. **Window** : plexiglass. **Scale** : dual bar (outer) + psi (inner).

PRICES : Please note that prices shown are the current list price for each gauge or product. OEM and re-seller discounts are available together with progressive quantity discounts.

50 mm Ø 1/4" BSP Class 1.6		
Bar + Psi	Code	Price
0/2.5	91530300	£ 45.95
0/4	91530400	£ 45.95
0/6	91530500	£ 45.95
0/10	91530600	£ 45.95
0/16	91530700	£ 45.95
0/25	91530800	£ 45.95
0/40	91530900	£ 45.95

Additional Options

Glycerine Filled	add 'G' to order code	£ 3.00
Panel Mounting Bracket	add 'S' to order code	£ 2.95



cewal UK LTD

Unit 4C • Woodhall Business Park • Sudbury • Suffolk • CO10 1WH

Tel: +44 (0) 1787 882038 • Fax: +44 (0) 1787 882039

Email: info@cewal.co.uk • Website: www.cewal.co.uk