

PRESSURE GAUGES - ALL STAINLESS STEEL CONSTRUCTION - BACK CONNECTION

APPLICATION : For use where aggressive conditions or substances may be used which would cause corrosion to standard gauges and for specific industries requiring all stainless steel construction, for example:- food processing, pharmaceutical and petrochemical. When glycerine filled particularly suitable for oscillating or surge pressures or an equipment subject to vibration.

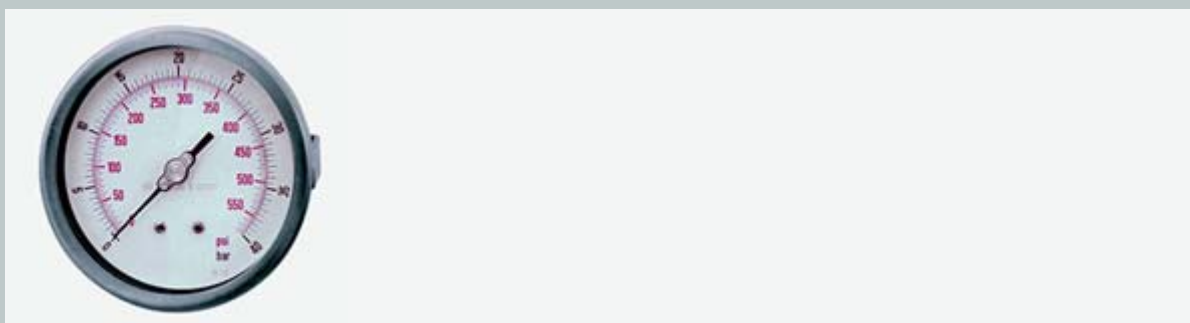
SPECIFICATION : **Case :** stainless steel AISI 304. **Connection :** stainless steel AISI 316. **Sensitive element :** stainless steel AISI 316. **Movement :** stainless steel. **Joints :** stainless steel. AISI 316. **Window :** plexiglass. **Scale :** dual bar (outer) + psi (inner).

PRICES : Please note that prices shown are the current list price for each gauge or product. OEM and re-seller discounts are available together with progressive quantity discounts.

100 mm Ø 1/2" BSP Class 1		
Bar + PSI	Code	Price
-1/0	91570000	£ 61.95
0/1	91570100	£ 59.95
0/1.6	91570200	£ 59.95
0/2.5	91570300	£ 59.95
0/4	91570400	£ 56.95
0/6	91570500	£ 56.95
0/10	91570600	£ 56.95
0/16	91570700	£ 56.95
0/25	91570800	£ 56.95
0/40	91570900	£ 56.95
0/60	91571000	£ 67.95
0/100	91571100	£ 67.95
0/160	91571200	£ 67.95
0/250	91571300	£ 67.95
0/400	91571400	£ 67.95
0/600	91571500	£ 67.95
0/1000	91571600	£ 67.95
0/1600	91571700	£ 67.95

Additional Options

Glycerine Filled	add 'G' to order code	£ 8.00		
Panel Mounting Bracket	add 'S' to order code	£ 5.95		
Panel Mounting Flange	add 'F' to order code	£ 7.95		
Electrical Contact - Single Min	add 'M' to order code	£ 80.00		
Electrical Contact - Single Max	add 'X' to order code	£ 80.00		
Electrical Contact - Min and Max	add 'C' to order code	£ 90.00		



cewal UK LTD

Unit 4C • Woodhall Business Park • Sudbury • Suffolk • CO10 1WH
Tel: +44 (0) 1787 882038 • Fax: +44 (0) 1787 882039
Email: info@cewal.co.uk • Website: www.cewal.co.uk