

PRESSURE GAUGES - ALL STAINLESS STEEL CONSTRUCTION - BACK CONNECTION

APPLICATION : For use where aggressive conditions or substances may be used which would cause corrosion to standard gauges and for specific industries requiring all stainless steel construction, for example:- food processing, pharmaceutical and petrochemical. When glycerine filled particularly suitable for oscillating or surge pressures or an equipment subject to vibration.

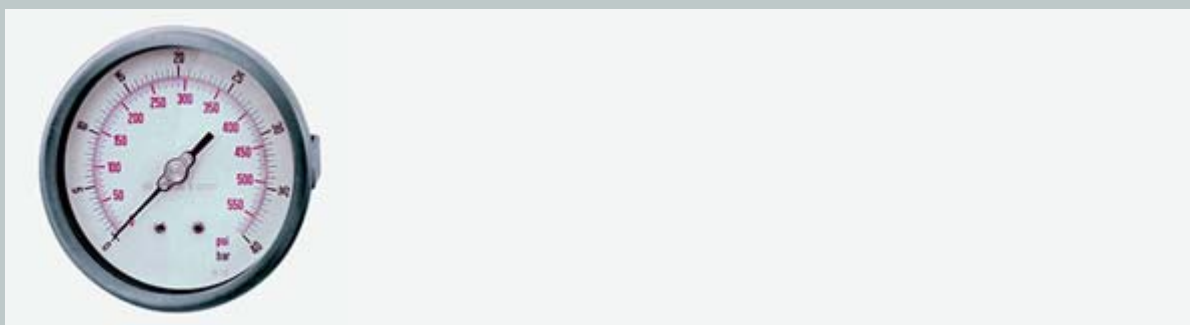
SPECIFICATION : **Case :** stainless steel AISI 304. **Connection :** stainless steel AISI 316. **Sensitive element :** stainless steel AISI 316. **Movement :** stainless steel. **Joints :** stainless steel. AISI 316. **Window :** plexiglass. **Scale :** dual bar (outer) + psi (inner).

PRICES : Please note that prices shown are the current list price for each gauge or product. OEM and re-seller discounts are available together with progressive quantity discounts.

150 mm Ø 1/2" BSP Class 1		
Bar + PSI	Code	Price
-1/0	91590002	£ 74.95
0/1	91590103	£ 72.95
0/1.6	91590204	£ 72.95
0/2.5	91590305	£ 72.95
0/4	91590406	£ 68.95
0/6	91590510	£ 68.95
0/10	91590620	£ 68.95
0/16	91590730	£ 68.95
0/25	91590840	£ 68.95
0/40	91590950	£ 68.95
0/60	91591060	£ 81.95
0/100	91591170	£ 81.95
0/160	91591280	£ 81.95
0/250	91591390	£ 81.95
0/400	91591400	£ 81.95
0/600	91591510	£ 81.95
0/1000	91591630	£ 81.95
0/1600	91591740	£ 81.95

Additional Options

Glycerine Filled	add 'G' to order code	£ 13.50
Panel Mounting Bracket	add 'S' to order code	£ 8.95
Panel Mounting Flange	add 'F' to order code	£ 12.50
Electrical Contact - Single Min	add 'M' to order code	£ 85.00
Electrical Contact - Single Max	add 'X' to order code	£ 85.00
Electrical Contact - Min and Max	add 'C' to order code	£ 95.00



cewal UK LTD

Unit 4C • Woodhall Business Park • Sudbury • Suffolk • CO10 1WH
Tel: +44 (0) 1787 882038 • Fax: +44 (0) 1787 882039
Email: info@cewal.co.uk • Website: www.cewal.co.uk